



## REGIONAL SPECIALISED METEOROLOGICAL CENTRE-TROPICAL CYCLONES, NEW DELHI TROPICAL WEATHER OUTLOOK

**DEMS-RSMC TROPICAL CYCLONES NEW DELHI DATED 04.08.2024**

**TROPICAL WEATHER OUTLOOK FOR NORTH INDIAN OCEAN (THE BAY OF BENGAL AND THE ARABIAN SEA) VALID FOR NEXT 168 HOURS ISSUED AT 0600 UTC OF 04.08.2024 BASED ON 0300 UTC OF 04.08.2024.**

### **LAND REGION:**

(A) DEEP DEPRESSION OVER NORTHEAST MADHYA PRADESH AND ADJOINING SOUTH UTTAR PRADESH (INDIA)

A CYCLONIC CIRCULATION FORMED OVER GANGETIC WEST BENGAL AND NEIGHBOURHOOD ON 31ST JULY, 2024. IT LAY OVER GANGETIC WEST BENGAL AND SOUTH BANGLADESH ON 1ST AUGUST, 2024. UNDER ITS INFLUENCE, A LOW PRESSURE AREA FORMED OVER GANGETIC WEST BENGAL AND ADJOINING JHARKHAND ON 2ND AUGUST, 2024. IT MOVED WESTNORTHWESTWARDS AND CONCENTRATED INTO A DEPRESSION OVER NORTH JHARKHAND AND NEIGHBOURHOOD IN THE SAME EVENING (1200 UTC) OF 2ND AUGUST, 2024. CONTINUING TO MOVE WEST-NORTHWESTWARDS, IT INTENSIFIED INTO A DEEP DEPRESSION AT 0300 UTC OF 3RD AUGUST OVER SOUTHWEST BIHAR AND ADJOINING NORTHWEST JHARKHAND. IT MOVED NEARLY WEST-NORTHWESTWARDS AND LAY CENTERED AT 0300 UTC OF TODAY, THE 4<sup>TH</sup> AUGUST OVER NORTHEAST MADHYA PRADESH AND ADJOINING SOUTH UTTAR PRADESH NEAR LATITUDE 25.0°N AND LONGITUDE 80.7°E, ABOUT 60 KM SOUTH-SOUTHEAST OF BANDA (UTTAR PRADESH), 120 KM WEST-SOUTHWEST OF KHAJURAHO (MADHYA PRADESH) AND 220 KM EAST-SOUTHEAST OF JHANSI (MADHYA PRADESH).

IT IS LIKELY TO CONTINUE TO MOVE WEST-NORTHWESTWARDS ACROSS NORTH MADHYA PRADESH AND ADJOINING SOUTH UTTAR PRADESH AND WEAKEN GRADUALLY INTO A DEPRESSION DURING NEXT 12 HOURS.

(B) LOW PRESSURE AREA OVER **SOUTHWEST RAJASTHAN & ADJOINING SOUTH PAKISTAN**

A LOW PRESSURE AREA FORMED OVER SOUTHWEST RAJASTHAN AND NEIGHBOURHOOD AT 0300 UTC OF YESTERDAY, THE 3RD AUGUST, 2024. IT MOVED NEARLY WESTWARDS AND LAY OVER **SOUTHWEST RAJASTHAN & ADJOINING SOUTH PAKISTAN** AT 0300 UTC OF TODAY, THE 4<sup>TH</sup> AUGUST, 2024. IT IS LIKELY TO CONTINUE TO MOVE NEARLY WESTWARDS DURING NEXT 12 HOURS.

Cloud distribution: (a) Isolated: <25%, Scattered:25-50%, Broken: 51-75%, Solid:>75%, Convection Intensity: (a) Weak: Cloud Top Temperature (CTT) >-25°C, (b) Moderate: CTT: - 25°C to -40°C, (c) Intense: CTT: - 41°C to -70°C and (d) Very Intense: : Less than -70°C  
PROBABILITY OF CYCLOGENESIS (FORMATION OF DEPRESSION):NIL: 0%, LOW: 1-33%, , MODERATE: 34-66% AND HIGH: 67-100%  
This is a guidance Bulletin for WMO/ESCAP Panel Member countries. Visit respective National websites for Country specific Bulletins

**BAY OF BENGAL:**

SCATTERED LOW AND MEDIUM CLOUDS WITH EMBEDDED INTENSE TO VERY INTENSE CONVECTION LAY OVER EAST BAY OF BENGAL, ANDAMAN SEA, GULF OF MARTABAN & ARAKAN COAST. SCATTERED LOW AND MEDIUM CLOUDS WITH EMBEDDED MODERATE TO INTENSE CONVECTION LAY OVER WEST BAY OF BENGAL & TENASSERIM COAST.

**\*PROBABILITY OF CYCLOGENESIS (FORMATION OF DEPRESSION) DURING NEXT 168 HRS:**

24 HOURS	24-48 HOURS	48-72 HOURS	72-96 HOURS	96-120 HOURS	120-144 HOURS	144-168 HOURS
NIL	NIL	NIL	NIL	NIL	NIL	NIL

**\*NOTE: EVERY 24HR FORECAST IS VALID UPTO 0300 UTC (0830 IST) OF NEXT DAY**

**ARABIAN SEA:**

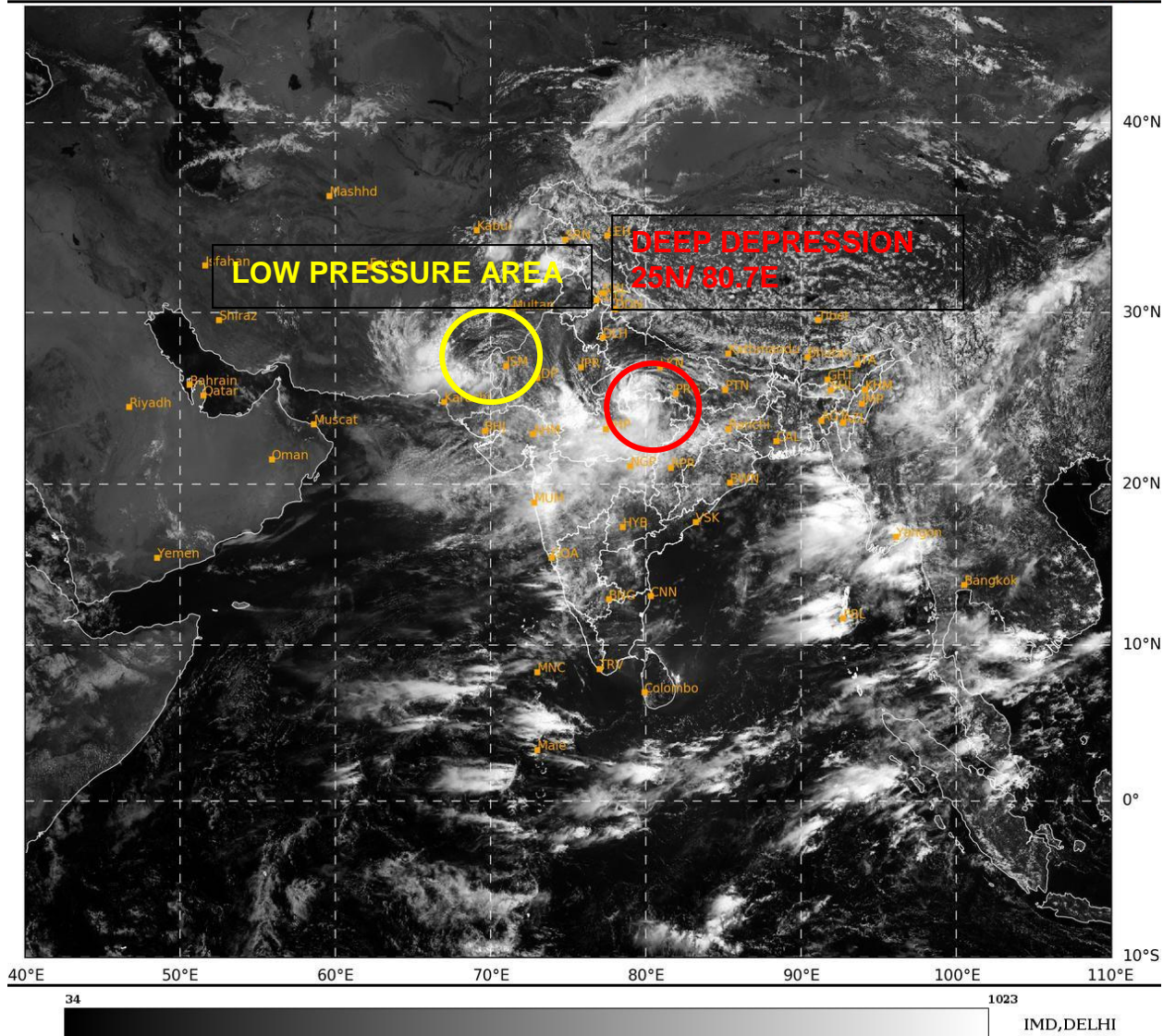
SCATTERED LOW AND MEDIUM CLOUDS WITH EMBEDDED INTENSE TO VERY INTENSE CONVECTION LAY OVER EASTCENTRAL ARABIAN SEA OFF MAHA COAST AND SOUTH ARABIAN SEA. SCATTERED LOW AND MEDIUM CLOUDS WITH EMBEDDED MODERATE TO INTENSE CONVECTION LAY OVER NORTHEAST ARABIAN SEA REST OF EASTCENTRAL ARABIAN SEA, LAKSHADWEEP ISLANDS AREA & MALDIVES AREA. SCATTERED LOW AND MEDIUM CLOUDS WITH EMBEDDED ISOLATED WEAK TO MODERATE CONVECTION LAY OVER NORTHWEST & WESTCENTRAL ARABIAN SEA, GULF OF KUTCH and GULF OF CAMBAY.

**\*PROBABILITY OF CYCLOGENESIS (FORMATION OF DEPRESSION) DURING NEXT 168 HRS:**

24 HOUR S	24-48 HOURS	48-72 HOURS	72-96 HOURS	96-120 HOURS	120-144 HOURS	144-168 HOURS
NIL	NIL	NIL	NIL	NIL	NIL	NIL

**\*NOTE: EVERY 24HR FORECAST IS VALID UPTO 0300 UTC (0830 IST) OF NEXT DAY**

**REMARKS:** NIL



Cloud distribution: (a) Isolated: <25%, Scattered:25-50%, Broken: 51-75%, Solid:>75%, Convection Intensity: (a) Weak: Cloud Top Temperature (CTT) >-25°C, (b) Moderate: CTT: - 25°C to -40°C, (c) Intense: CTT: - 41°C to -70°C and (d) Very Intense: : Less than -70°C  
PROBABILITY OF CYCLOGENESIS (FORMATION OF DEPRESSION):NIL: 0%, LOW: 1-33%, , MODERATE: 34-66% AND HIGH: 67-100%  
This is a guidance Bulletin for WMO/ESCAP Panel Member countries. Visit respective National websites for Country specific Bulletins